

Installing Gimp.

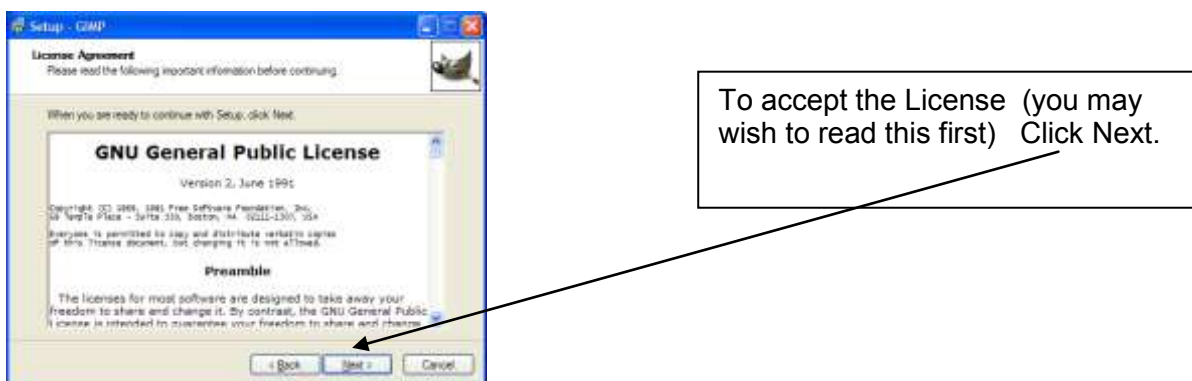
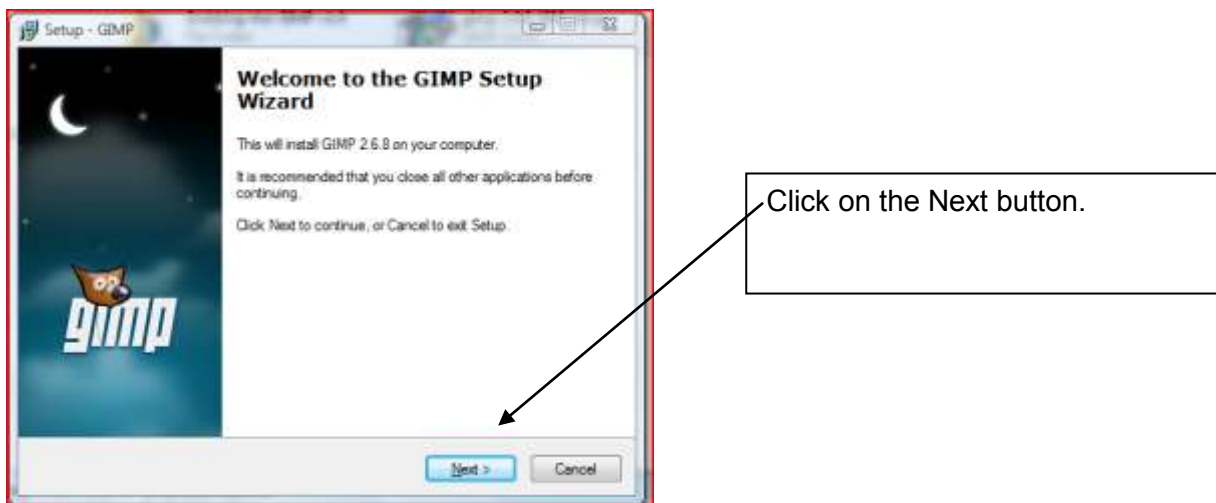
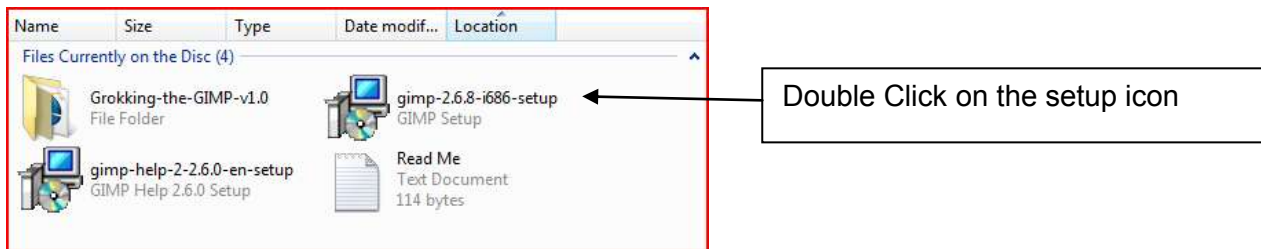
Firstly what is Gimp? It is a free open source software program. It is written and maintained by volunteers. In particular it is designed for editing digital photographs. It is also suitable for professional art work, web graphics, and digital scrapbooking. In other words it is a very useful program, and best of all it is free.

Gimp can be downloaded from: <http://www.gimp.org>

If you are going to download this yourself the size of the download is 17.3 MB. Plus the Help files which are a further 23.3 MB. Simply go into the website, find the version you wish to download, and click on the Download button. Do the same for the Help Files.

The alternative for our Members is to install from our CD. This is the path I will be demonstrating. The version we are using is 2.6.8

On the CD open the Gimp Folder.
You will be presented with the window below.





Click Install Now

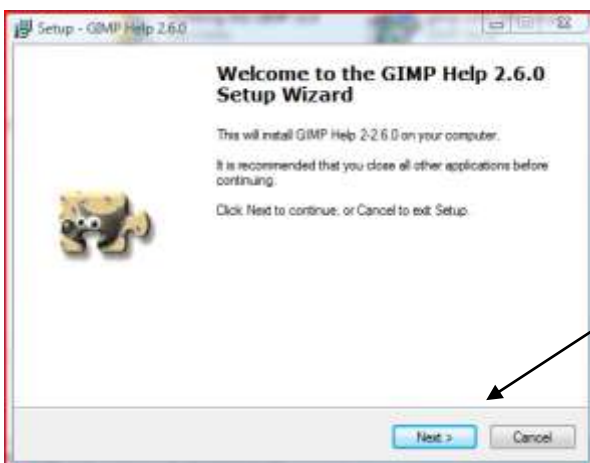
Please be patient this may take a few minutes.



Un-tick the Launch now box.
Click Finish

We now need to install the Help Files. Go back to the CD and the Gimp Folder.

Double Click on the setup icon for the gimp help files. You will notice these are 2.2.6.



Click Next.

Again click Next. In the following window click Install.

When the Help Files are installed a window will appear, click Finish.

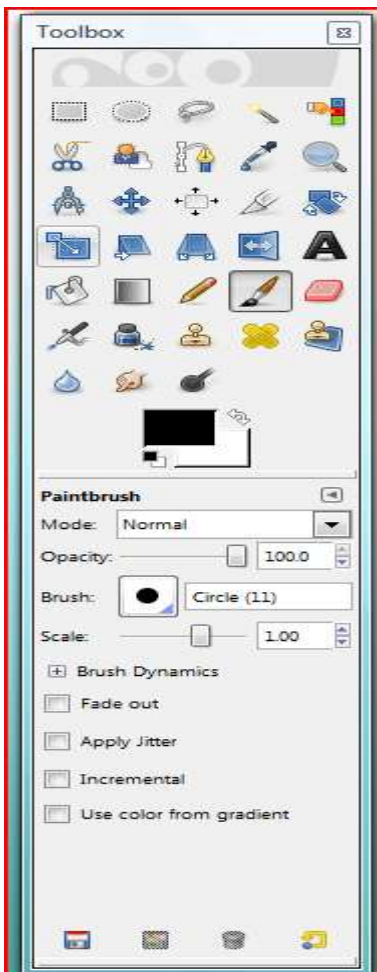
Close the CD window.

Setting up the Program.

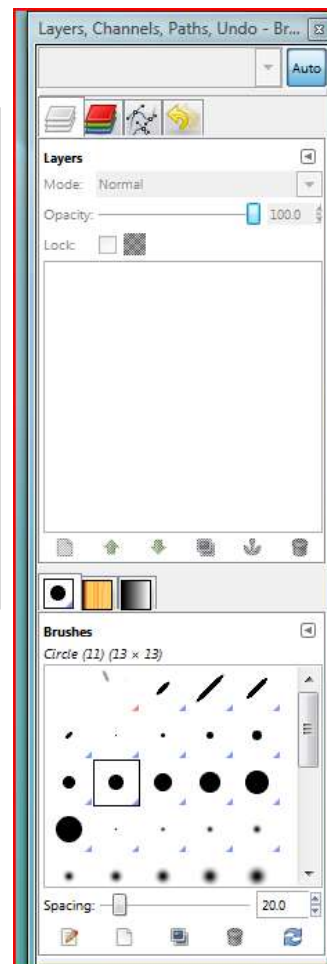


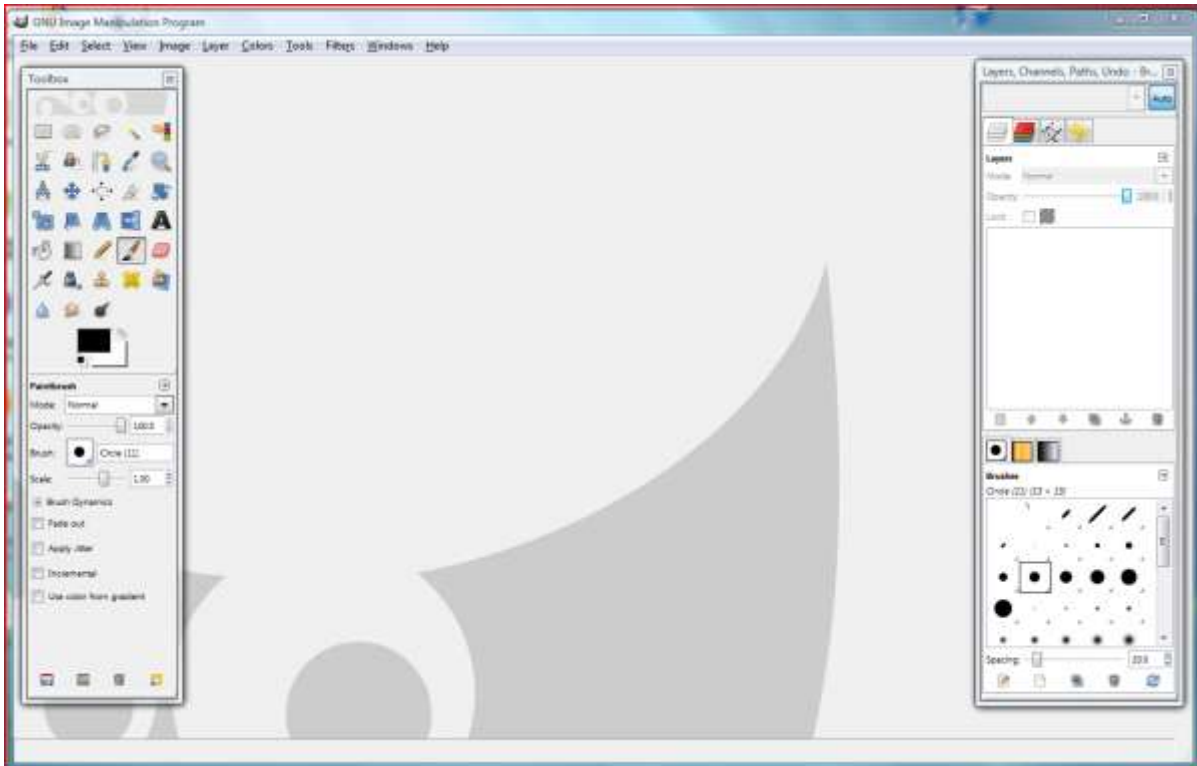
Double click the Gimp icon on the Desktop. It will take a few minutes to open the 1st time.

Increase the size of the Work area.



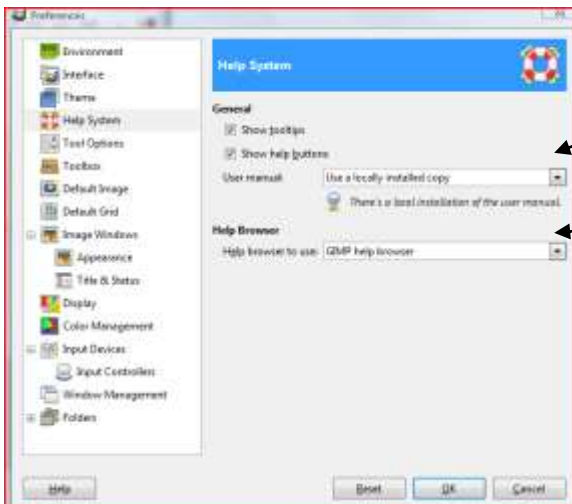
Upon opening the Gimp for the first time you will end up with this sort of setup. The Work space needs to be enlarged. Enlarge it as you would any other window using the double headed arrow on the corners, or sides. Place the Toolbox and the Layers and channels box on to the top of the work area. The result is shown below.





Getting the Help files.

Go to Edit/Preferences/Help System. The window below will appear.



In the User Manual Box, choose "Use a locally installed copy".

In the Help Browser box, make sure to choose Web Browser. This will ensure that the Help files will come from your computer, rather than going online every time you click Help.

Click O.K.

Good luck you have installed Gimp and the Help Files. Have fun.

Peggy 16th March 2010